

Phrasebox

v1.1.1



Phrasebox is a phrase arpeggiator that gives you control over playback like never before.

With its DAW-like piano roll you can create expressive, layered melodies from simple MIDI chords, which aren't limited in timing and length like traditional step arpeggiators.

The notes of the piano roll correspond to the pitch order of notes, with "special" notes (like the loudest or quietest notes played), which let you control exactly which notes you want to play. It also features a lock to key option so your transposed notes are never out of key, and the included controller window lets you also send MIDI CC data out to your instruments.

Phrasebox also features generation options, so you can generate unlimited unique phrases at the click of a button.

venomode

Installing Phrasebox

To install Phrasebox on Mac or Windows, simply run the installer and follow the instructions. Once installed, Phrasebox will be ready to use the next time you open your DAW.

To install the plugin on Linux, simply extract the files and run the install.sh script. In your Terminal app, run the following commands:

```
cd ~/Downloads Change to your Downloads folder
mkdir tempinstaller Create a temporary folder to extract to
tar -C tempinstaller -zxvf PLUGIN.tar.gz Extract the bundle
bash tempinstaller/install.sh Run the installer script
rm -R tempinstaller/ Clean up the temp folder
```

Phrasebox requires the following system specifications. Please note, Ubuntu and Mac versions are 64-bit only, and due to MIDI routing limitation, Phrasebox is not compatible with Reason, Maschine, or VST3

Windows

- Windows 7/8/10
- 32/64-bit VST/AAX Compatible DAW

Mac OSX

- OSX 10.7+
- 64-bit VST/AAX/AU Compatible DAW

Ubuntu

- 18.04+
- 64-bit VST Compatible DAW

Registering Phrasebox

The plugin will run in demo mode until a licence is entered and the software is restarted. In demo mode the plugin will not recall the state from a saved track, it will timeout after 30 minutes, and the saving of presets is unavailable. After you have purchased a licence, you will need to register the plugin, which will unlock the full, unrestricted version of the software. Any tracks you have saved with the demo version will now recall correctly.

Click the padlock icon in the top bar area of the plugin window. A window will display where you can enter your licence from the Venomode website user area. After you have entered your licence, the full version will unlock the next time you open your DAW. Ensure your licence exactly matches what is shown in the website. For convenience, you can click your licence in the website to copy it to your clipboard, and then paste it into the plugin. Your licence is the long string of text containing your name, email, and unique code, separated by three colons (:::).

Using Phrasebox

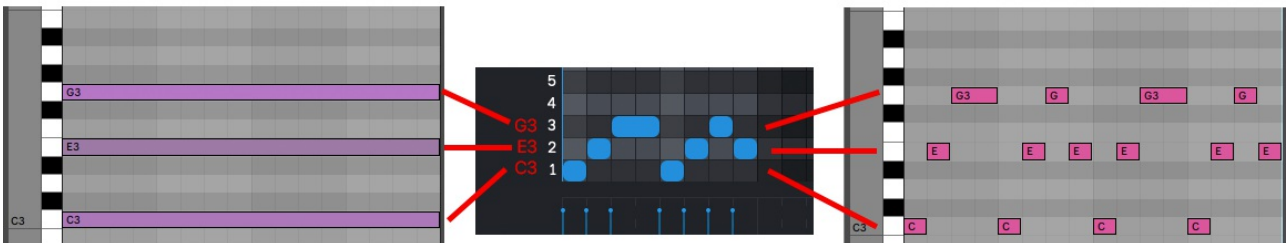
Setting Up Phrasebox

Phrasebox is a MIDI processor, which takes a stream of MIDI notes from your DAW, and creates a stream of MIDI data as an output. As such, you need to route the output of the Phrasebox plugin to the input of your choice of instrument.

MIDI routing is different dependent on the DAW. For example, In Reaper and Bitwig you can add Phrasebox and a VST instrument on the same track (in that order), and the notes will automatically pipe through. In other DAWs such as Ableton and Cubase, you need to load your instrument and Phrasebox on separate channels, and route the MIDI from one to the other.

You can see up-to-date examples of routing different DAWs in our [FAQs](https://venomode.com/faqs#phraseboxroute) (<https://venomode.com/faqs#phraseboxroute>).

How It Works

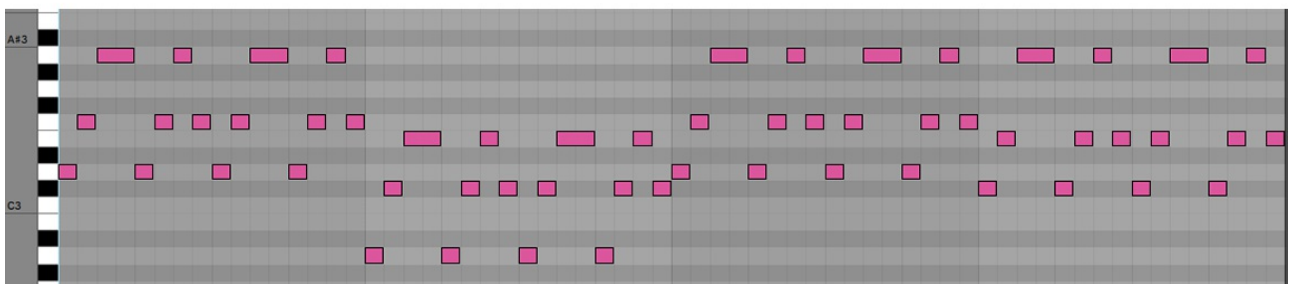
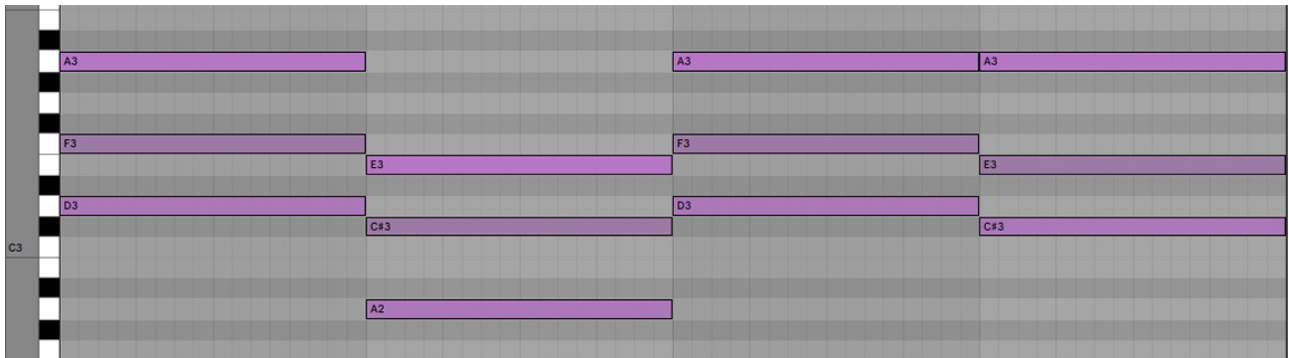


You can view a full-size copy of the above image [here](https://venomode.com/images/Phrasebox/helpers/Mappings.png) (<https://venomode.com/images/Phrasebox/helpers/Mappings.png>).

Phrasebox takes your MIDI chords, and maps each note onto a row in the piano roll. The rows marked 1-8 are the notes of your chord, from lowest to highest in pitch. In the example image above, we are playing a 3 note chord of C major, with the notes C, E, and G. These 3 notes will be mapped to rows 1-3, with row 1 being C, row 2 being E, and row 3 being G. Phrasebox then plays back the phrase in the piano roll, using your notes for each row. As we are playing a 3 note chord, rows 4-8 will not produce any output.

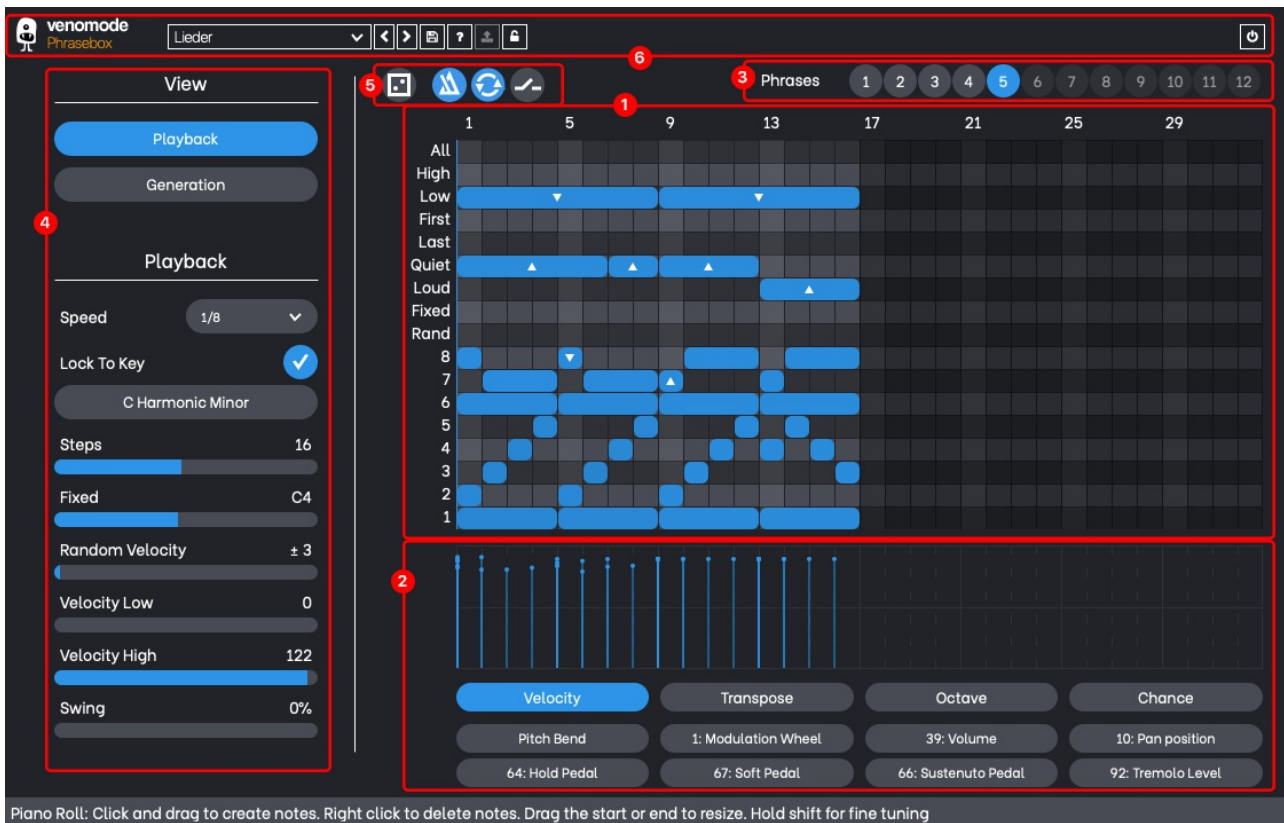
In the example image above, we have set our phrase length to 8 steps, with a playback speed of 1/16. This means that each step will play a 1/16th note, and the phrase lasts only half a bar. Phrasebox will loop the phrase in time with your DAW, and as can be seen in the output, the phrase will play twice per bar.

Below is an example of a more complex chord sequence using the same phrase pattern in Phrasebox. As you can see, Phrasebox detects the changes in chords, and adjusts the playback to match.



You can view a full-size copy of the above image [here](https://venomode.com/images/Phrasebox/helpers/Mappings2.png) (<https://venomode.com/images/Phrasebox/helpers/Mappings2.png>).

You can also read a more in-depth guide at the [Venomode website](https://venomode.com/news/how-to-use-phrasebox) (<https://venomode.com/news/how-to-use-phrasebox>).



1. Piano Roll

The piano roll is where you control the pattern the arpeggiator is playing. Notes can be added by clicking and dragging to the desired length. You can move notes by dragging them, and resize by dragging the left and right edges of the note. If you hold shift while dragging, you can disable snapping. A right-click will delete the note. If you hold shift and click a note, you can add that note to the selection. If you hold shift and drag in an empty area, you can drag a box selection over multiple notes.

The darker a note is, the lower the velocity, and they will appear more transparent as the chance is lowered. An up or down arrow indicates the transposition applied to the note, and its direction relative to the base note. Right-clicking in an empty area brings up an additional menu with option such as copy, paste, and delete.

Each row specifies which of the input notes are to be played. The numbers 1-8 represent the 8 lowest notes, with 1 being the lowest. The special note rows above them select from the incoming MIDI based on certain rules:

- All plays all the notes as a chord
- High & Low play the highest and lowest notes in pitch
- First & Last play the earliest and latest notes
- Quiet/Loud play the quietest and loudest velocity-wise

- Fixed plays a predefined note, set via a slider in the playback section
- Random plays a random note from the incoming MIDI

Each column defines a 'step' based on the playback speed, for example, at 1/16 playback speed, each step will be 1/16th in length (a semiquaver).

In the right-click popup menu is an option called "Fill Row Pattern", featuring a selection of different values. Each option features two numbers separated by a slash. The first number is how many steps a note should be in length, and the second is how many steps there should be of silence. For example, the "1/0" option will fill each step with notes, the "4/0" option will fill a row with notes that are 4 steps long, and "4/4" will create notes that are 4 steps long, with 4 steps of silence between them.

The piano roll features a couple of keyboard shortcuts - pressing the key "a" will select all notes, and the "backspace" or "delete" key will remove any selected notes.

New in 1.0.3:

Each row can be sent to a separate MIDI channel. If you click the row's name, you will get a popup that lets you choose a channel between 1 and 16. The default is to just send all notes out of channel 1. This could be useful for multi-timbral phrases, or for controlling individual strings of a guitar instrument for example. Please Note: not all DAWs support this feature. Some DAWs such as Ableton Live will amalgamate all data to channel 1.

You can drag and drop a MIDI chord sequence onto the piano roll, and it will apply the current phrase to your notes. A new MIDI clip will be created that can be dragged out of Phrasebox into your DAW. Please Note: not all DAWs can drag and drop directly into Phrasebox. You may need to first export a MIDI file to your computer, and drag the newly created file into Phrasebox.

2. Note Modifiers & Controller Envelopes

Below the piano roll are the note modifier and controller envelopes. Selecting a button here will show the corresponding window. For the velocity, transpose, octave, and chance windows, you will see a vertical marker for each note. You can drag the point of these to adjust the corresponding value. Velocity has a range between 1 and 127, transpose can go up or down 24 semitones (2 octaves), and the octave can range between -4 and 4. The chance value determines how likely the note is to be played back. Set at full (100%), every note will play back as expected, while at minimum (1%), that note will play 1 in 100 times on average. The chance value is calculated during playback, so with values other than 100%, playback will be different every time.

The 8 lower buttons show the controller envelopes. The first button is locked to Pitch Bend, but the other 7 are freely assignable. Right click the button to select an alternate controller number. If you double click a button while playback is stopped, Phrasebox will send a MIDI CC value to the output. This is so you can use MIDI Learn in your instrument. During playback, Phrasebox plays back all 8 of these envelopes in sync with the DAW.

Envelopes can be drawn by creating points. Points are created by clicking, and dragging to move. Any number of points can be created, and you can delete them with a right click. Holding shift disables snapping.

3. Phrase Buttons

The 12 phrase buttons are different saved variations of your sequence. You can toggle between phrases by clicking the buttons, or automating in your DAW. To automate phrase changes, Phrasebox exposes a parameter called "Phrase" which can be directly controlled from your DAW. When you select a phrase, a new set of notes and controller envelopes are used. Other values such as the controller numbers, number of steps, and playback speed stay constant. You can drag and drop one phrase on to another to duplicate it.

4. Main Controls

The sidebar contains the various controls to modify playback and generation. The two buttons at the top labeled "Playback" and "Generation" switch the display between the playback and generation controls.

4a. Playback Section

The playback section is where you control how Phrasebox plays back the phrase.

The Speed value selects how fast the sequence is played back relative to the host tempo. For example, at 1/16 playback speed, each step in the piano roll will be 1/16th in length (a semiquaver).

The Lock To Key option allows you to make sure any notes are played back in the correct key. When enabled, any output will be transposed to match the key selected from the menu, by clicking the key box. This means you can not only mash your keyboard and get great results, but your transposed note patterns will always work.

For example, if you use the transpose option on a note, you may find some MIDI input is out of key. For example, your phrase plays a trill with a succession of notes, where every other note is transposed up by 1. If your song is in C major, and you play an E note, the trill will work (as 1 semitone above E is F), however, if you play in a C note, the trill will be out of key (as a semitone above C is C#, which is not on the key of C). The lock to key option will then round the C# up to a D to fit the scale.

By design, the lock to key function attempts to scale up before down, so you have certainty of how it works. Using the trill example above, if we were to transpose down instead of up, we would want to go down 2 semitones instead of 1. If you play an E note, then transposing down by 1 would be D#, which would attempt to round back up to E, resulting in the same note being played for every note. Going down by 2 guarantees we will drop down a note in the scale.

If you have lock to key enabled when loading a preset, it will stay enabled with your chosen key so the new phrase always matches your song. If you have lock to key disabled when loading a preset, it will load whatever key and enablement are stored in the preset. If you want to create your own preset, it's best to turn off the lock to key function before saving for this reason. The factory presets all have the lock disabled, so you can set a key and freely browse presets without the key changing.

Steps - The number of steps of the piano roll to play. For example, 16 steps at 1/16 playback speed would be a full bar in 4/4.

Fixed - A fixed MIDI note that is used for the "Fixed" row of the piano roll.

Random Velocity - A random velocity value that is added or subtracted from every note during playback. For example, at ± 10 , a note with an original velocity of 100 would play back somewhere in the range 90-110. This is great for adding a bit of dynamic variation to playback.

Velocity Low & Velocity High - These are used to remap the range of velocities, from 1-127, to whatever low and high are set. The values are scaled within this range, and you

can even have low higher than high. This will have the effect of reversing velocities, with quieter notes now being loud.

Swing - Adds a swing to the playback.

4b. Note Generation

The generation window shows options for how the randomiser works.

Note Density - The amount of notes being generated. Higher values will result in more notes.

Note Length - The length of notes, with higher values resulting in longer notes.

Velocity - A Range of velocity values. You can drag from either end of the blue bar to adjust the start and end range.

Transpose - A range of transpose value. You can drag from either end of the blue bar to adjust the start and end range. The chance slider adjusts how likely a note will be transposed. At full, every note will be transposed, and at minimum, a note has about a 1/100 chance of being transposed.

Octave - A range of octave value. You can drag from either end of the blue bar to adjust the start and end range. The chance slider adjusts how likely a note will be transposed an octave. At full, every note will be transposed an octave, and at minimum, a note has about a 1/100 chance of being transposed.

Chance - A range of chance values. You can drag from either end of the blue bar to adjust the start and end range.

Use Special Notes - When selected, notes in the piano roll will use all notes, including the special notes (Loud, Quiet etc.). When disabled, only the notes 1-8 are created.

The edit controllers button shows the generation options for the controllers.

4c. Controller Generation

The controller generation window shows options for how the controller randomiser works. There are 8 rows, with each row corresponding to which controller it controls.

Toggle - The toggle button before the controller name enables generation for this CC. By default they are all turned off, and need enabling before generation occurs.

Range Slider - Sets the range of controller values that will be generated. You can drag from either end of the blue bar to adjust the start and end range.

Density - How many events are created. At full, it will create a random event for each step.

The edit notes button shows the generation options for the notes.

5. Options

Randomise Button (Dice Icon)

The randomise button will generate a new phrase based on your settings when clicked. If you right click, you can select what will be generated.

Everything - Everything is generated - notes, velocities, transposition, chances, and controllers

Notes and Modifiers Only - A new set of notes will be generated, along with new velocities, transposition, and chances

Modifiers Only - Only velocities, transposition, and chances will be generated for existing notes

Velocities Only - Only velocities will be generated for existing notes

Octaves Only - Only octaves will be generated for existing notes

Chances Only - Only velocities will be generated for existing notes

Controllers Only - Only controllers will be generated

New in 1.0.8:

Sync To DAW (Metronome Icon)

When enabled, the phrase will play back in sync with the DAW, and is the default behaviour. When disabled, the phrase will only start playing back when input is received. Releasing all the notes will stop the phrase playing and reset back to the beginning.

Loop Freeform (Loop Icon)

Only applicable when not synced to DAW (see above). When enabled, the phrase will repeat indefinitely. When disabled, it will play in one-shot mode.

Latch (Switch Icon)

When enabled, notes will continue to play even after you release them. Playing a new chord will note-off the old notes, and hold the new notes.

6. Top Bar

The top bar is where you can manage the plugin. The middle section shows the currently selected preset, and if you open this list you can choose from all the factory and user presets. Clicking on the left and right arrow icons manually cycles to the previous or next preset. The save icon will open a window where you can save the current state of the plugin as a custom preset. Enter your preset name in this window and click save.

You can view this manual at any time by clicking the question mark button.

The cog icon will open the registration window. Enter your name, email and serial number exactly as shown in your confirmation email and click "Register", or copy the keyfile to your clipboard from the user area of the Venomode website and click "Paste Keyfile". See the registering Phrasebox section for more info.

The included factory presets showcase a variety of different ways of using Phrasebox. Each preset contains multiple phrases, usually variations or more complex versions of the first phrase.

Bass - Basslines designed from the lowest note of the incoming MIDI

Chords - Patterns designed around playing full chords

Melodies - Melody lines designed to work with either a scale as input, or a chord sequence

Patterns - Patterns that are similar to traditional step-sequence arpeggiators

Piano - Full expressive piano parts, often using the hold pedal

Special - Patterns that use the special note modifiers, controllers, or plain weird patterns

Triads - Patterns designed for three note chords

Terms

Phrasebox and this manual are ©2020 Venomode.

No unauthorised copying, renting, hiring, distributing, lending, deconstructing, re-selling, or any other unintended use.

The following is a legal agreement between you, the end user (USER), and Venomode.

The enclosed software program (the SOFTWARE) is licensed by Venomode for use only on the terms set forth herein. Please read this license agreement. Installing the program indicates that you accept these terms.

License of registered Software:

The full version of the SOFTWARE may be used only by the registered USER. It may not be copied and distributed to other users. Venomode can take legal actions against users, who distribute Venomode Software without permission.

License of unregistered Software:

The evaluation version of the SOFTWARE ("DEMO VERSION") may be used by the USER for evaluation purposes. It may not be copied or distributed without prior written consent from Venomode.

Grant of License:

Venomode grants to you the right to install the SOFTWARE on any and all of the computers owned by the USER, providing only one device is running the SOFTWARE at any time.

Copyright:

The SOFTWARE is owned by Venomode and is protected by UK copyright laws and international treaty provisions. All data related to the SOFTWARE, including the manual, the installers and the serial numbers are property of Venomode. You are not allowed to distribute or modify them without written permission.

Privacy:

Venomode assures to process only data which is technically necessary or which is intellectual belonging of Venomode. This software will only read, write or modify files which are property of Venomode or which are technically necessary to grant a proper operation of the software and the copy protection.

Venomode will not send, submit, distribute or sell any personal data from the user.

3rd party products:

The user is not allowed to publish or sell commercial 3rd party products which are based on this product without written permission from Venomode.

License transfers (full version only):

The license for this product can only be transferred to a new user with written permission from Venomode. After a finished transfer the old user must remove this program completely from his computers. The old user's license is withdrawn.

Copy protection:

This product is copy protected. The user is not allowed to apply or distribute technologies or knowledge for circumventing the copy protection of Venomode products. Venomode products can refuse to operate if technologies for circumventing the copy protection (like cracks) are applied. This product can detect and deactivate technologies for circumventing the copy protection of Venomode products.

Copyright infringement:

Venomode products use technology to protect against copyright infringement. In the case of significant signs of copyright infringement, Venomode can withdraw the USER license.

Reverse engineering:

It is illegal to modify any intellectual property belonging to Venomode without written permission. This software is protected against reverse engineering. Venomode cannot be held responsible for damage or loss of data, hardware, music equipment, health or business profits which arises through an illegal modification.

Severability clause:

If a provision of this Agreement is or becomes illegal, invalid or unenforceable in any jurisdiction, that shall not affect:

1. the validity or enforceability in that jurisdiction of any other provision of this Agreement; or
2. the validity or enforceability in other jurisdictions of that or any other provision of this Agreement.

Acceptance of this license agreement:

By downloading and/or installing this SOFTWARE, the USER agrees to the terms of this LICENSE.

Disclaimer of warranty and liability:

THE SOFTWARE AND THE ACCOMPANYING FILES ARE PROVIDED "AS IS" WITHOUT WARRANTY OF ANY KIND. TO THE MAXIMUM EXTENT PERMITTED BY APPLICABLE LAW, VENOMODE DISCLAIMS ALL WARRANTIES, EXPRESSED OR IMPLIED, INCLUDING, BUT NOT LIMITED TO, ANY IMPLIED WARRANTIES OF PERFORMANCE, MERCHANTABILITY, FITNESS FOR A PARTICULAR PURPOSE, AND NONINFRINGEMENT. TO THE MAXIMUM EXTENT PERMITTED BY APPLICABLE LAW, IN NO EVENT SHALL VENOMODE BE LIABLE FOR ANY DIRECT, INDIRECT, CONSEQUENTIAL OR INCIDENTAL DAMAGES (INCLUDING, BUT NOT LIMITED TO, DAMAGES FOR LOSS OF BUSINESS PROFITS, BUSINESS INTERRUPTION OR LOSS OF BUSINESS INFORMATION) ARISING OUT OF THE USE OF OR INABILITY TO USE THE SOFTWARE. VENOMODE CANNOT BE HELD LIABLE FOR DAMAGE OR LOSS TO YOUR HARDWARE, MUSIC EQUIPMENT, DATA, SOFTWARE OR HEALTH. YOU USE THIS SOFTWARE ON YOUR OWN RISK.